



Dedicate®



FUNGICIDE

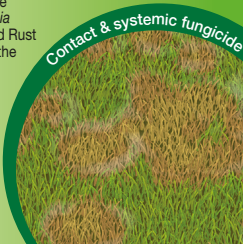
Dedicate® is a contact and systemic fungicide for the control of Fusarium Patch (*Microdochium nivale*), Red Thread (*Laetisaria fuciformis*), Anthracnose (*Colletotrichum cereale*), Dollar Spot (*Sclerotinia homoeocarpa*), Leafspot (*Drechslera* spp.), and Rust (*Puccinia* spp.) in amenity turf, at any time of the year.

MAPP 17003

Dedicate® is an aqueous suspension concentrate containing 200 g/L Tebuconazole and 100 g/L trifloxystrobin

250 ml e

Contact & systemic fungicide



Safety Information:

Dedicate



Warning

Suspected of damaging the unborn child

Very toxic to aquatic life with long lasting effects

Wear protective gloves/protective clothing/eye protection/face protection.

IF exposed or concerned: Call a POISON CENTER or doctor/physician.

Dispose of contents/container to a licensed hazardous-waste disposal contractor or collection site except for empty clean containers which can be disposed of as non-hazardous waste.

Contains trifloxystrobin, 1,2-benzisothiazolin-3-one and 5-chloro-2-methylisothiazol-3-one/2-methylisothiazol-3-one. May produce an allergic reaction.

To avoid risks to human health and the environment, comply with the instructions for use.

For important information and detailed directions for use please see inside leaflet.

For 24 hour emergency information contact Bayer CropScience Ltd - Telephone: 0800 220876

The (COSHH) Control of Substances Hazardous to Health Regulations may apply to the use of this product at work.

Bayer Environmental Science
Bayer CropScience Limited
230 Cambridge Science Park
Milton Road - Cambridge CB4 0WB
Tel: 00800 1214 9451

www.escience.bayercropscience.co.uk
for MSDS and larger label

Bayer

Batch number : see on the pack

GB79231792F - RA3a - ARTICLE 79284667

Important Information

FOR USE ONLY AS A PROFESSIONAL HORTICULTURAL FUNGICIDE.

For Use on Amenity Grassland and Managed Amenity turf.

Maximum individual dose: 1 L/ha
Maximum number of treatments: 4 per year

Other Specific restriction:

A minimum of 28 days must be observed between applications.

**READ THE LABEL BEFORE USE. USING THIS PRODUCT IN A MANNER THAT IS INCONSISTENT WITH THE LABEL MAY BE AN OFFENCE.
FOLLOW THE CODE OF PRACTICE FOR USING PLANT PROTECTION PRODUCTS.**

SAFETY PRECAUTIONS

Operator Protection

Engineering control of operator exposure must be used where reasonably practicable in addition to the following personal protective equipment :

WEAR SUITABLE PROTECTIVE CLOTHING AND SUITABLE PROTECTIVE GLOVES when handling the concentrate, applying by hand-held equipment or handling contaminated surfaces.

However, engineering controls may replace personal protective equipment if a COSHH assessment shows they provide an equal or higher standard of protection.

DO NOT BREATHE SPRAY.

WHEN USING DO NOT EAT, DRINK OR SMOKE.

WASH ANY CONTAMINATION from eyes immediately.

IF YOU FEEL UNWELL, seek medical advice (show label where possible).

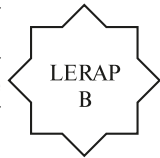
WASH HANDS AND EXPOSED SKIN before meals and after work.

Environmental Protection

Do not contaminate water with the product or its container (Do not clean out application equipment near surface water. Avoid contamination via drains from farmyards and roads).

DO NOT ALLOW DIRECT SPRAY from horizontal boom sprayers to fall within 5 m of the top of the bank of a static or flowing waterbody, unless a Local Environmental Risk Assessment for Pesticides (LERAP) permits a narrower buffer zone, or within 1 m of the top of a ditch which is dry at the time of application. Aim spray away from water.

This product qualifies for inclusion within the Local Environment Risk Assessment for Pesticides (LERAP) scheme. Before each spraying operation from a horizontal boom sprayer, either a LERAP must be carried out in accordance with CRD published guidance or the statutory buffer zone must be maintained. The results of the LERAP must be recorded and kept available for three years.



Storage and Disposal

KEEP OUT OF REACH OF CHILDREN.

KEEP IN ORIGINAL CONTAINER tightly closed in a safe place.

WASH OUT CONTAINER THOROUGHLY, empty washings into spray tank and dispose of safely.

DO NOT RE-USE CONTAINER for any purpose.

KEEP AWAY FROM FOOD, DRINK AND ANIMAL FEEDING STUFF.

DIRECTIONS FOR USE:

IMPORTANT: This information is approved as part of the Product Label. All instructions within this section must be read carefully in order to obtain safe and successful use of this product.

DEDICATE® may be applied year round to managed amenity turf sites including : Golf courses, Sport turf (football and rugby pitches, tennis, bowls and cricket pitches) Ornamental turf (parks, institutional, commercial and residential lawns, municipal grounds, cemeteries.

GENERAL INFORMATION:

DEDICATE® is a fungicide exhibiting both contact and systemic mode of action. It is a broad spectrum triazole and strobilurin fungicide recommended for control or reduction of a range of diseases on managed amenity turf.

RESTRICTIONS:

Do not apply during drought conditions or to frozen turf.

If grass is being mown, DEDICATE® should be applied after cutting and further mowing should not take place until AT LEAST 48 hours after treatment.

APPLICATION:

For control of Fusarium Patch, Red Thread and Dollar Spot, use 1 L of DEDICATE® in 400 - 500 litres of water per hectare of turf.

Control of Leaf Spot and a reduction of Rust and Anthracnose may also be achieved. For use with knapsack sprayers or vehicle mounted hydraulic sprayers.

Application Equipment			
Vehicle-mounted Hydraulic Sprayer		Knapsack Sprayer	
Rate per hectare	Water per hectare	Rate per 100 m²	Water per 100 m²
1 Litre	400-500 litres	10 mls	4 -5 litres
		Rate per 500 m²	Water per 500 m²
		50 mls	20-25 litres

Application Timing

DEDICATE® should be used preventatively or as early as possible in the disease cycle, applying at the first sign of disease.

DEDICATE® can be used when grass is either dormant or actively growing and displays both protective and some curative activity. If grass is being mown, DEDICATE® should be applied after cutting and further mowing should not take place until AT LEAST 48 hours after treatment. This is to allow adequate movement of the systemic active ingredients throughout the plant.

Allow at least 28 days between applications of DEDICATE®.

Alternate with a fungicide having a different mode of action.

DEDICATE® can be applied year round.

Resistance Management:

DEDICATE® contains trifloxystrobin which belongs to the QoI class of chemistry and also contains Tebuconazole, of the Dimethylation class of chemistry which are two separate classes of fungicide with different modes of action together in one product should reduce the chance of resistance appearing however the possible development of diseases resistant to DEDICATE® cannot be excluded or predicted. Certain fungal pathogens are known to develop resistance to QoI products when used repeatedly.

The use of DEDICATE® should conform to resistance management strategies. Such strategies may include rotating with products containing active substances with different modes of action, or limiting the total number of applications per season.

Bayer recommends responsible product stewardship to ensure effective long term control of the fungal diseases on this label.

Do not apply more than 2 sequential applications of DEDICATE® or any product containing a QoI fungicide.

Alternate with a fungicide having a different mode of action.

Do not apply more than 4 applications per year of any product containing a QoI fungicide.

For further advice on resistance management in turf contact your agronomist or specialist advisor and visit the FRAG-UK website.

Mixing:

Sprayers should be THOROUGHLY CLEANED before use and filters and jets checked for damage and blockages.

Thoroughly shake the pack before use.

Half fill the sprayer tank with clean water and agitate.

Add the required amount of DEDICATE®.

Mix thoroughly and make up to the required volume of water while still agitating. Spray immediately after mixing. Continue agitation at all times during spraying and stoppages, until the tank is completely empty.

Wash out all spray equipment thoroughly with water immediately after use.

DEDICATE® is a registered trademark of Bayer CropScience